

MONTHLY MEMBERSHIP PROGRESS REPORT

District 26 M3

Results as of: 3/31/2026

GMT:

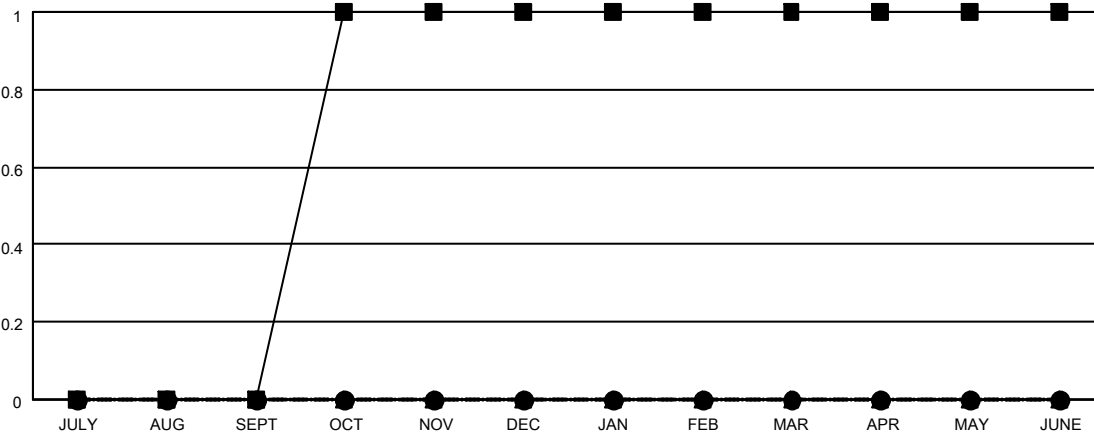
LOCATION MISSOURI

GMT CA

Clubs			
RESULTS FOR 2025-2026			
QUARTER	NEW CLUB GOAL	NEW CLUBS	DROPPED CLUBS
JULY/AUG/SEPT	0	0	0
OCT/NOV/DEC	1	0	2
JAN/FEB/MAR	0	0	0
APR/MAY/JUNE	0	0	0

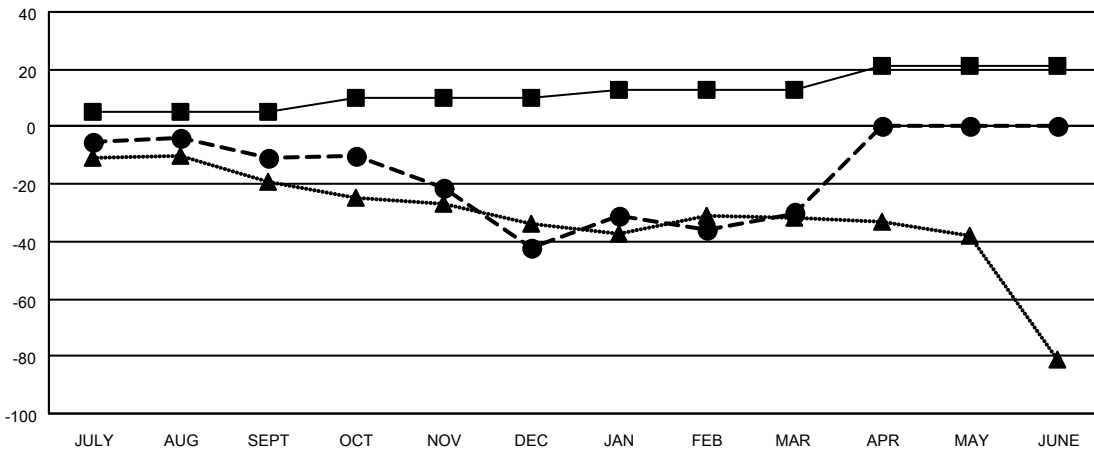
Members			
RESULTS FOR 2025-2026			
QUARTER	MEMBER GROWTH NET GOAL	MEMBER GROWTH ACTUAL	DROPPED MEMBERS ACTUAL (including transfers)
JULY/AUG/SEPT	5	18	27
OCT/NOV/DEC	5	8	39
JAN/FEB/MAR	3	42	23
APR/MAY/JUNE	8	0	0

GOALS AND ACTUAL NEW CLUBS CUMULATIVE



- - CURRENT YEAR GOALS FOR NEW CLUBS
- - CURRENT YEAR ACTUAL NEW CLUBS
- ▲ - LAST YEAR ACTUAL NEW CLUBS

GOALS AND ACTUAL MEMBERS CUMULATIVE



- - MEMBER GROWTH NET GOAL
- - MEMBER GROWTH ACTUAL
- ▲ - LAST YEAR MEMBERSHIP ACTUAL

DROPPED CLUBS: 2	20 CLUBS OF 47 ADDED 1 OR MORE NEW MEMBERS	GENDER DISTRIBUTION MALE 707 (72.36%) FEMALE 269 (27.53%)
DROPPED MEMBERS DECEASED 14 CLUB CANCELLED 11 OTHER 64 TOTAL 89	CLICK HERE FOR CUMULATIVE MEMBERSHIP DATA	TOTAL FAMILY UNIT MEMBERS 91 FAMILY MEMBERS PAYING HALF DUES 47